



# **DANEPOINT**

## **Mortar Pointing Adaptor**

### **User Guide**

## Table of contents:

<b>Congratulations on your DanePoint Mortar Pointing Adaptor.....</b>	<b>2</b>
<b>Ensure you have received the following .....</b>	<b>2</b>
<b>Choose the cordless drill .....</b>	<b>2</b>
<b>How to install the DanePoint Adaptor on a Cordless Drill .....</b>	<b>3</b>
<b>Before you start pointing .....</b>	<b>5</b>
<b>Choose the right Mortar-Mix .....</b>	<b>5</b>
<b>Choose the right Nozzle Tip .....</b>	<b>5</b>
<b>Application .....</b>	<b>5</b>
<b>Compress the Mortar-Mix in the joints .....</b>	<b>5</b>
<b>Tips og tricks .....</b>	<b>5</b>
<b>How to replace the Auger .....</b>	<b>6</b>
<b>Cleaning the Pointing Adaptor.....</b>	<b>7</b>
<b>Trouble Shooting .....</b>	<b>7</b>
<b>Spare part drawing.....</b>	<b>8</b>

## Congratulations on your DanePoint Mortar Pointing Adaptor

To ensure the optimum use of the DanePoint Mortar Pointing Adaptor please study the user guide carefully before use.

### Ensure you have received the following:

Content:

- 1 pcs DanePoint Mortar Pointing adaptor with a lid
- 4 pcs Joint nozzles (Nylon: 3 mm,17 mm) (Metal: long 12 mm, large 15 mm)
- 1 pcs Mortar Stainless Scoop
- 2 pcs Drill Mounting Arm with suitable nuts
- 1 pcs Latex hose
- 1 pcs Lubricant
- 1 pcs Wrench 10 mm
- 1 pcs Allen Key 4 mm
- 1 pcs Allen Key 5 mm
- 1 pcs Cam stud for drill

### Choose the cordless drill:

You have to choose a cordless drill where you are able to disconnect the hammer function and easily control the speed.

## !!! Warning !!!

When using electrical tools always follow basic safety precautions to reduce the risk of fire, electrical shock and personal injury.

1. Know your tool – Read this manual carefully as well as the Drill manual associated with the Drill used with this DanePoint Mortar Pointing Adaptor.
2. Do not put hands in Hopper while the drill is plugged in. Remove the battery before you inspect the Auger and Auger Barrel.
3. Do not tighten or install parts, while the drill is plugged in.
4. Do not use a water hose to clean the tool, while plugged in (Read the cleaning instruction carefully).
5. In the event that tools plugs or jams, do not continue to operate tool. (Read the trouble shooting section).
6. Before operating tool, be sure Nozzle Allen Key is inserted and locking Nozzle Holder in place.
7. Do not overreach. Maintain balance and a proper footing at all times whilst operating.
8. Pas på ledningen. Bær aldrig rundt på værktøjet i boremaskineledningen.
9. Keep hands away from all moving parts. (Install Cam Guard before using)
10. Store idle tool. When not in use store your tool in a dry secure place. Keep out of the reach of children.
11. Disposal. If the Adaptor is damaged and is to be disposed. All plastic and metal parts should be separated and handed over at the recycle station.

## How to install the DanePoint Mortar Pointing Adaptor on a Cordless Drill:

### A. If your Cordless Drill has a Chuck



### B. If your cordless drill doesn't have a Chuck





**4** Assemble Drill Mounting Arms as shown on the photo. Pay attention to the fact that the arms need to bend out at the fittings.



**5** Feed the Cam Stud into Cam Coupling by running the Drill forward.



**6** Slip the Black Fitting over the back of the Drill.  
*Attention: Make sure that the hole for the Allen Key is pointing upwards*



**7** Tighten the 3 Nuts on each side of the Adaptor.  
*Attention: Be sure not to overtighten the screw*



**8** Adjust the Drill Mounting Arms so the Auger is centered in the Auger Barrel. By removal of the Nozzle holder, check to see if the Auger needs to be raised or lowered.



**9** Tighten the 2 Allen Nuts in the Black Fittings so it pinches around the blackend of the Drill.  
*Attention: Make sure that the Drill is straight compared to the Adaptor.*



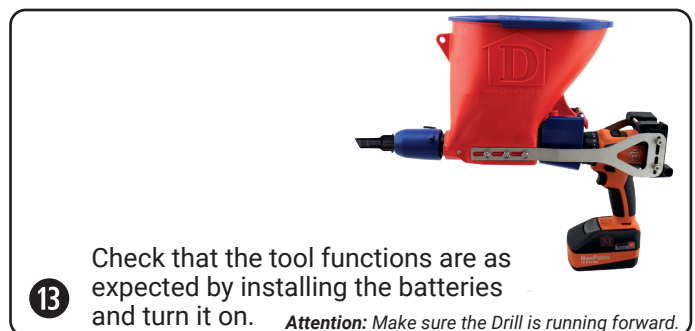
**10** Pull the Cover to protect the Cordless Drill, and fasten the Hook to the lower Bolt of the fitting.



**11** The blue Cam Guard is fitted.



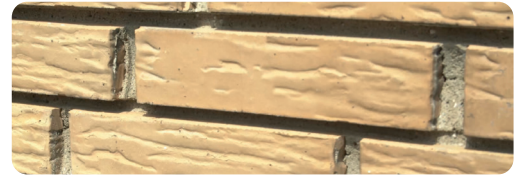
**12** Use suitable Nozzle Tip according to joint.



**13** Check that the tool functions are as expected by installing the batteries and turn it on. *Attention: Make sure the Drill is running forward.*

## Before you start pointing:

The joint needs to be scraped to a depth of approx. 20 mm. Make sure that the joints are properly cleaned of loose mortar remains as well as dust and dirt. Moisten the brick wall thoroughly and wait until the surface is dry.



## Choose the right Mortar-Mix:

Make sure that you choose the right Mortar-Mix according to the properties of your brick and the impact of the environment. When repointing use the same Mortar-Mix as applied originally.

We recommend to use pumpable Mortar designed for use with Mortar Guns.

If you choose to mix your own Mortar-Mix we do recommend that you use a plasticizer additive, which makes the Mortar-Mix airy and light. The Mortar will flow easily through the adaptor and fill out the joints. Mix the mortar according to specifications. The consistency needs to be homogeneous and flexible.

The moister Mortar ensures an optimal attachment to the brick, and the joints are 100 % filled out.



## Choose the right Nozzle Tip:

Pick out a Nozzle Tip that fits the width of the joint. Rather choose 1 mm wider than 1 mm narrower. The Mortar Pointing Adaptor will press the mortar thoroughly into the bottom of the joint

## Selection of joint nozzles

## Application:

Fill the ready mortar-mix in the hopper.

Check the consistency by running Mortar-Mix through the adaptor.

Place the Mortar Gun perpendicular against the Wall.

Tilt the Mortar Pointing gun 15 degrees towards the direction of the joint and carefully turn on the drill. Fill up the joints thoroughly with the mortar mix as you move along the directions of the joint.



The Mortar-Mix needs to extrude 5 mm above the brick edge.

Work your way from the bottom up. Start with the bed joint, then move on to the adjacent head joints, and then move up to the next bed joint.

## Compress the Mortar-Mix in the joints:

The mortar joints need to be compressed, when they have been allowed to partially harden (until a thumbprint barely leaves an indentation),

Pack the surplus mortar into the joint with a suitable jointer/pointing tool. Finish up by removing the surplus mortar with a brush.

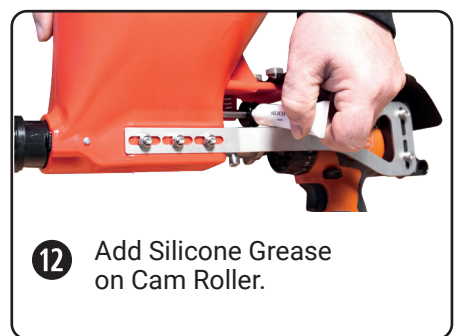
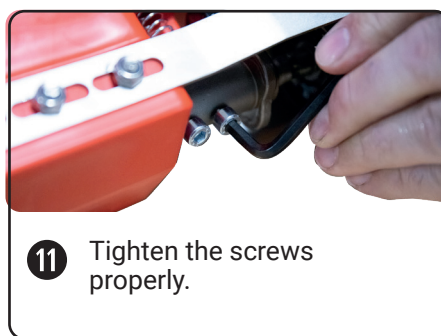
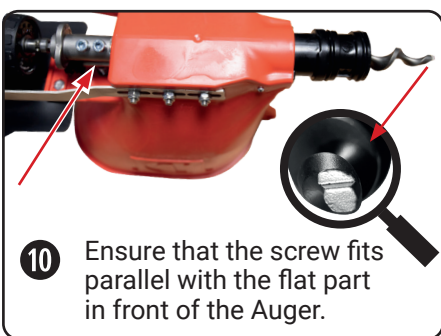
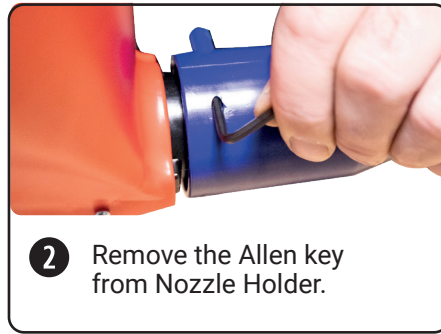


When the joints are hardened, you need to acid wash the bricks to remove any excess mortar.

## Tips og tricks:

- Mix a Plasticizer additive in the mortar mix, and the mix will flow faster and easier through the adaptor.
- Make the Mortar-Mix a bit moister, whereby you ensure a better attachment and a more efficient pointing process.
- Keep DanePoint Mortar Pointing Gun tilted at an angle of 15 degrees towards the joint, this ensures that you fill up the joint from within.
- Keep the DanePoint Mortar Pointing Gun horizontally in front of the joint, and then you move along the bed/horizontally joint instead of rotating your arms and back. This way you will have a better standing work position.
- Head/Vertical joints are filled from the bottom up.
- A Pointing Team of 3 people is optimal. 2 persons to operate the mortar guns and the third person is to ensure a constant supply of mortar mix to the operators as well as compressing the joints.

## How to replace the Auger:



# Cleaning the Pointing Adaptor:

It is important to clean the Pointing Adaptor thoroughly, both when taking a break and at the end of the working day.

## A. Short break (5 min - 1 hour)

- 1 The Adaptor is emptied of Mortar-Mix
- 2 Run Rinsing Water through the adaptor until the Pointing Adaptor is thoroughly rinsed through.

## B. Long break (longer than 1 hour)

- 1 Do not empty the Auger Barrel of Mortar-Mix.
- 2 Turn the Pointing Adaptor upside down and shake the mortar surplus out of the Hopper.
- 3 Fill up the Hopper with rinsing water and clean up the Hopper with a wet brush
- 4 Turn on the Drill while maintaining a rotating movement with the Pointing Adaptor until the water and remaining mortar is emptied out.
- 5 Remove the Nozzle Holder and clean it thoroughly inside.  
The Auger Barrel at the O-Rings also need a proper cleaning.

# Trouble Shooting:

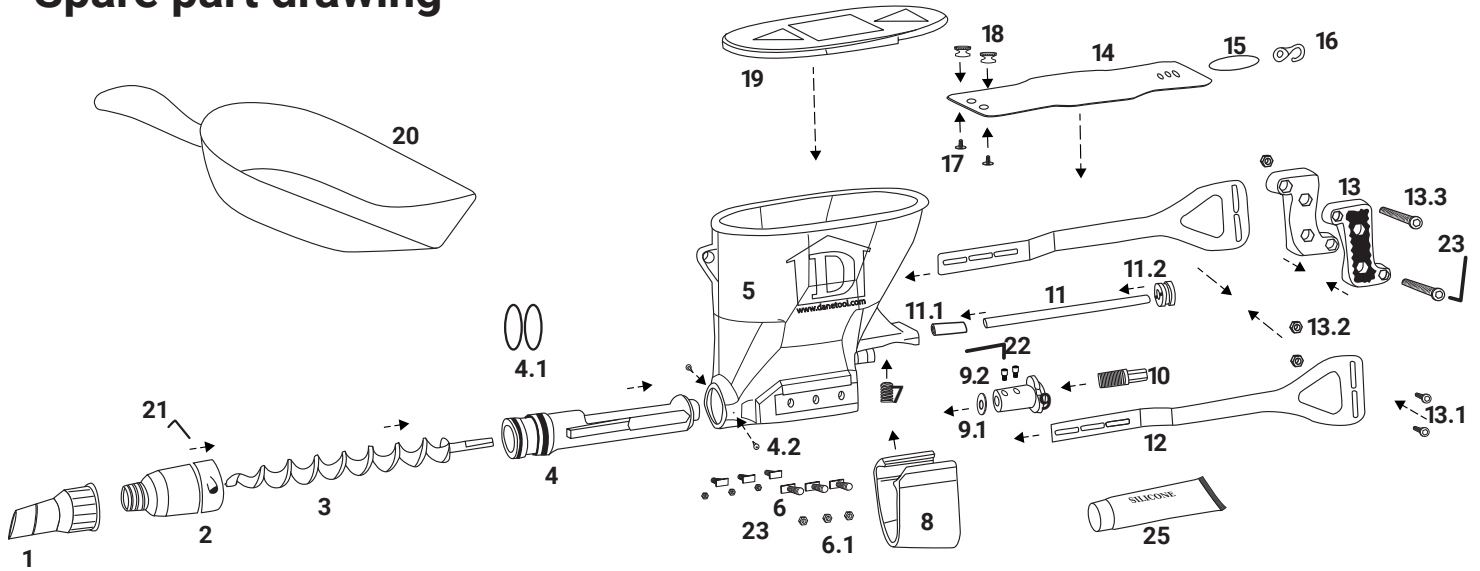
## A. Tool is not delivering mortar out of Nozzle.

- 1 Make sure that the Drill is in forward position. Tool will not deliver in reverse.
- 2 Make sure that the screws on Cam-Coupling and Blade-Coupling are tight.  
Remember to tighten on the flat part of the Auger. It can be difficult to see the flat part when placed in Cam-Coupling (See installation guide (page 6 – Step 10).  
There is a flat part in the front of the Auger, which is parallel to the flat part in the back.  
In this way, you can easily install the Auger in the correct manner.
- 3 Make sure the Cam-Roller is in place, and that the vibrator is working in the Hopper.  
The Vibrator will not work if the Roller is not on the Vibrator Rod.
- 4 Inspect Auger for wear. Take the Nozzle Holder off and look down the inside of the Barrel.  
If there is a gap of 4 mm or more around the Auger, then the Auger needs to be replaced.  
If the Auger is not worn and there is a similar gap. the Auger Barrel needs to be replaced.

## B. The adapter is shaking or it plugs.

- 1 Dismantle the Nozzle Holder. Wash off properly and check if any solidified mortar remains, this can hit against the Auger during running and cause the Nozzle Holder to shake.
- 2 Dismantle the Nozzle Holder. Check that the Auger is in the center of the Auger Barrel. It is fine for the Auger to be raised slightly if the Auger Barrel is empty of Mortar Mix. The mortar mix will push the Auger a bit down.  
If not centered then untighten the 2 Allen Bolts on each side of the Black Fitting. Now you can adjust the Drill Mounting Arms, so that the Auger is centered in the Auger Barrel. When centered tighten the Allen Bolts again. Beware not to overtighten.
- 3 Check to see that the Auger is installed correctly, and it joins the rear end of the Auger Barrel.

# Spare part drawing



Item	Article	Pcs	Article No.
1.10	Nozzle Tip Nylon - Straight 3 mm	1	220430-3
1.11	Nozzle Tip Nylon - Straight 5 mm	1	220430-5
1.12	Nozzle Tip Nylon - Straight 9 mm	1	220430-9
1.13	Nozzle Tip Nylon - Straight 12 mm	1	220430-12
1.14	Nozzle Tip Nylon - Straight 17 mm	1	220430-17
1.20	Nozzle Tip Nylon - Angled 3 mm	1	220431-3
1.21	Nozzle Tip Nylon - Angled 5 mm	1	220431-5
1.22	Nozzle Tip Nylon - Angled 9 mm	1	220431-9
1.23	Nozzle Tip Nylon - Angled 12 mm	1	220431-12
1.30	Nozzle Tip Metal - Small	1	220487
1.31	Nozzle Tip Metal - Medium	1	220488
1.32	Nozzle Tip Metal - Large	1	220489
1.33	Nozzle Tip Metal - 45 Degree	1	220485
1.34	Nozzle Tip Metal - Long	1	220486
2	Nozzle Holder with thread	1	220426
3	Stainless Auger	1	220228
3.1	Hardened Stainless Auger	1	220229
4	Auger Barrel	1	220428
4.1	O-Rings	2	220462
4.2	Screw for Auger Barrel	2	220428-1
5	Hopper	1	220420
6	T-Bolts	6	220466
6.1	Nuts 6 mm	6	220472+6
7	Spring	1	220484
8	Cam Guard	1	220424
9	Cam Coupling	1	220446
9.1	Washer 24 mm - 8 mm hole	1	220480

9.2	Allen Bolt 6mm - 10 mm	3	220482-10
10.1	Cam Stud - bits	1	220291
10.2	Cam stud for drill	1	220290
11	Vibrator Rod	1	220454
11.1	Rubber Tube for Vibrator Rod	2	220456
11.2	Cam roller	1	220452
12.1	Drill Mounting Arms (short)	1	220438-2
12.2	Drill Mounting Arms (long)	1	220438-1
13	Black Fittings	1	220436
13.1	Allen Bolt with washer 5 mm	4	220476
13.2	Nuts - 5 mm	4	220472-5
13.3	Allen Bolt 6 x 60 mm	2	220482-60
13.4	Nuts - 6 mm	2	220472-6
14.1	Cover with hook (Long)	1	220448-1
14.2	Cover with hook (Short)	1	220448-2
15	Rubber Band for hook	5	220458
16	Hook for cover	1	220460
17	Bolts - 6 mm - 10 mm	2	220478
18	Closed Finger Nuts 6 mm	2	220474
19	Lid	1	220422-0
20	Stainless Mortar Scoop	1	220251
21	Allen Key 3 mm	1	220470-3
22	Allen Key 4 mm	1	220470-4
23	Allen Key 5 mm	1	220470-5
24	Wrench 10 mm	1	220468
25	Lubricant 15 gr	1	220215-15
26	Lubricant 100 gr	1	220215-100

Dealer:

Producer:

**DaneTool**

Cementstøbervej 5  
6630 Rødding  
Denmark  
+45 6916 6300  
Info@danetool.com